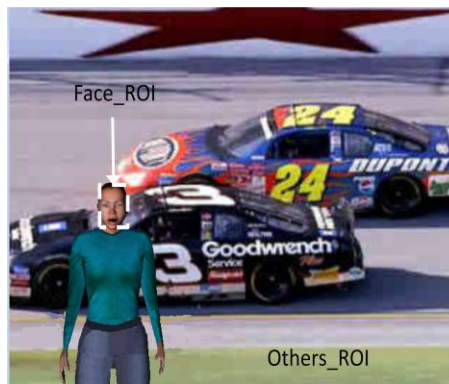


- **Developing gaze-sensitive interface with real-time estimation of point-of-gaze and eye physiology.**

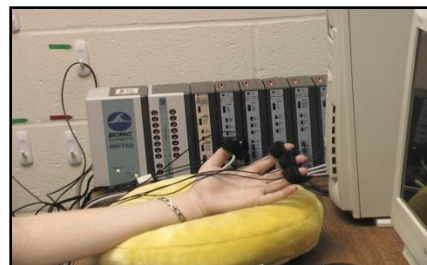
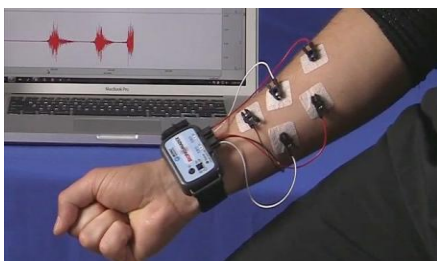


A participant wearing an eye tracker.



A virtual interface segmented into Regions of Interest (ROIs), e.g., Face_ROI (face region), Others_ROI (other portions) of the visual stimulus.

- **Real-time estimation of physiological signal features.**



Data Acquisition of real-time physiological signals which are subsequently mapped to one's affective state.